

Control and safety technology for conveyor systems

Complete solutions for the sugar, wood-based panel, chemical and mineral industries



Please feel free to contact us.

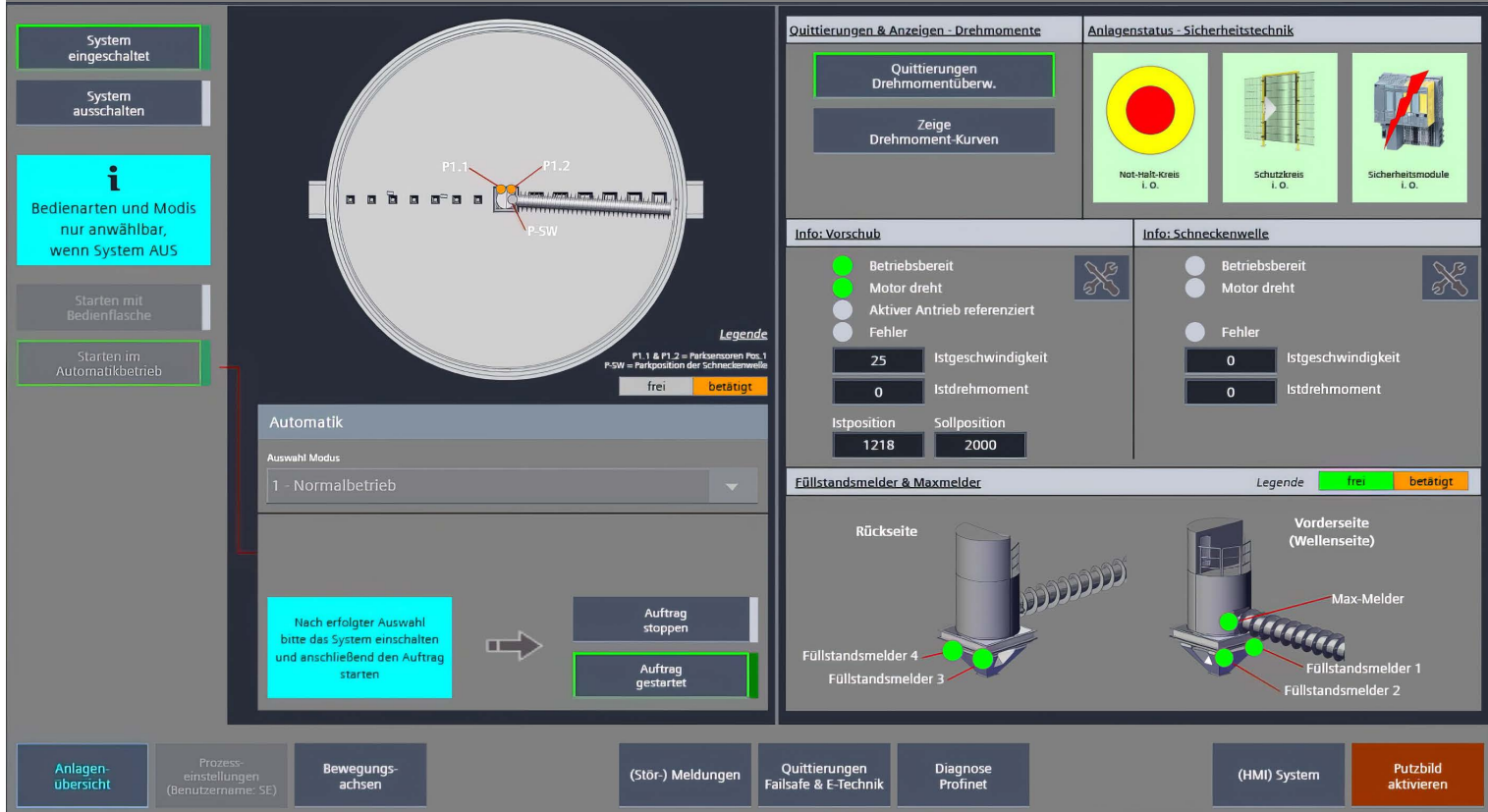


AMF-Bruns GmbH & Co. KG · Hauptstraße 101 · 26689 Apen · Germany
Phone: +49 (0)44 89 - 72 7100 · info@amf-bruns.de
www.amf-bruns.com

04/2025



www.amf-bruns.com



User-friendly and efficient

Our control and safety technology for conveyor systems

As a leading provider of conveyor systems, AMF-Bruns is committed to quality and innovation. New to our portfolio: In-house control and safety technology – for fully integrated solutions from a single source.

Tailored to your requirements

In addition to our proven conveyor technology, you can now also design and implement your system's control and safety technology with AMF-Bruns. Our complete solution encompasses conveyor systems, programming and machinery safety.

Benefit from significant time and cost savings and maximum safety – both during the project planning phase and in ongoing system operation.

Your benefits with AMF-Bruns control and safety technology:

- Significant time and cost savings through control systems from AMF-Bruns
- More efficient use of resources
- Ensuring the highest possible level of safety
- Optimisation throughout the entire project planning and operating life of the system

Less planning, rapid availability

Everything from a single source – from planning to operation

Your advantages during the planning phase

- Streamlined coordination processes, fewer meetings
- Up to four weeks' planning time saved – systems become operational more quickly (approx. one twelfth faster deployment)
- Simple onboarding for new project participants thanks to clear 3D visualisations
- Structured planning minimises subsequent changes

Smooth commissioning

- System simulation during the engineering phase ensures that commissioning at the customer's site begins with a fault-free control programme
- Online training for operating personnel saves time and costs
- Documentation compliant with all applicable regulations, directives and standards

Added value in after-sales Service

- Rapid availability
- Extended system lifespan
- Touch display with intuitive user interface
- Remote maintenance available with optional service agreement
- User and failsafe programming are combined, enabling a fast but mechanically gentle response in hazardous situations. This protects sensitive components and reduces repair costs.

Do You Have Any Questions?

I would be happy to advise you in a personal, non-binding consultation.

Michael Lux

Project manager electrical engineering /
ZMSE – certified machinery safety expert –

Phone +49 (0) 44 89 - 72 7528

Mobile +49 (0) 151 - 57 145712

Michael.Lux@amf-bruns-dienstleistung.de

