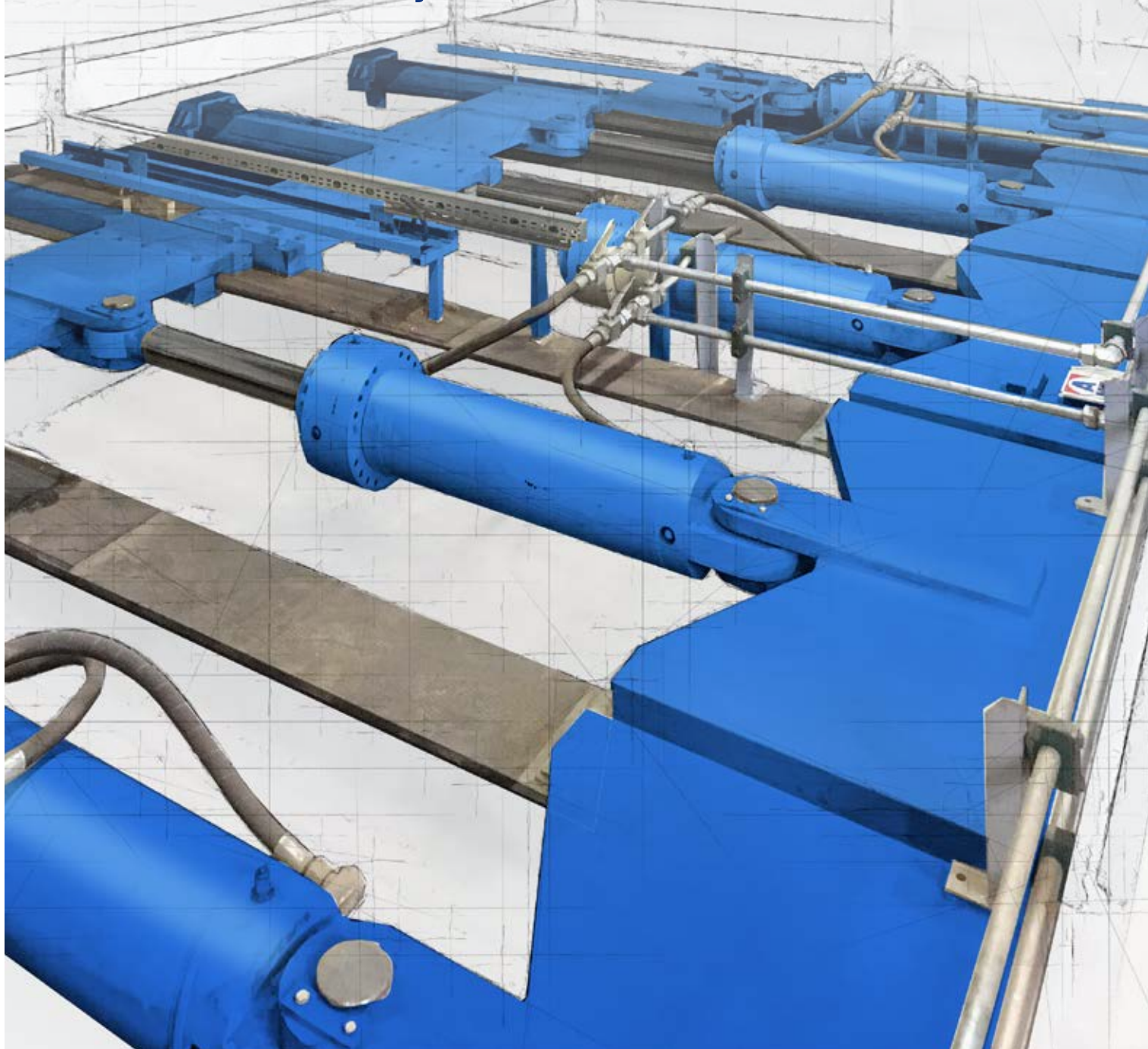


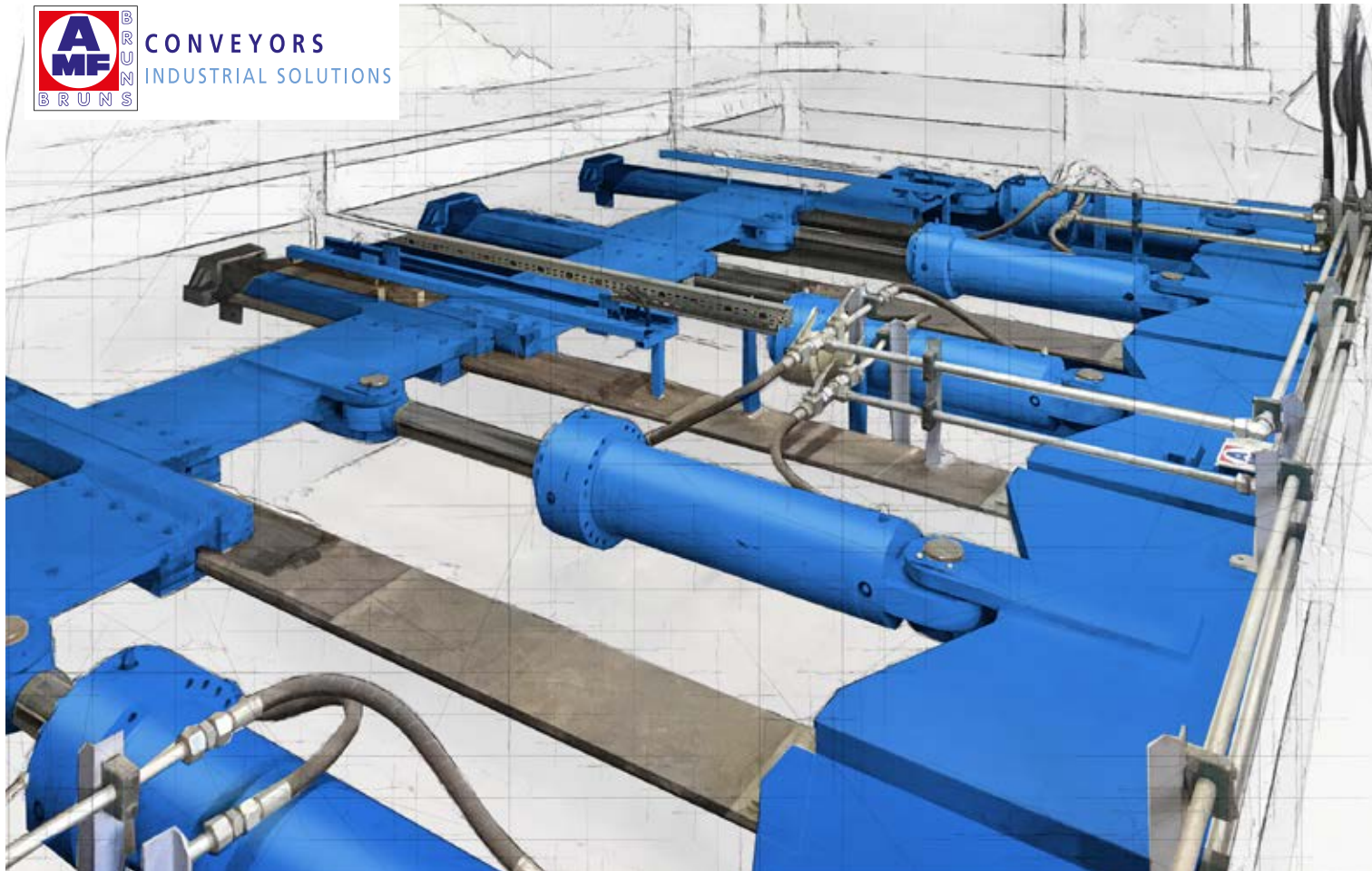
Push and pull floors

For intermediate storage and metered dispensing in the production process within the wood industry



CONVEYORS
INDUSTRIAL SOLUTIONS

www.amf-bruns.com



Push and pull floors SUB

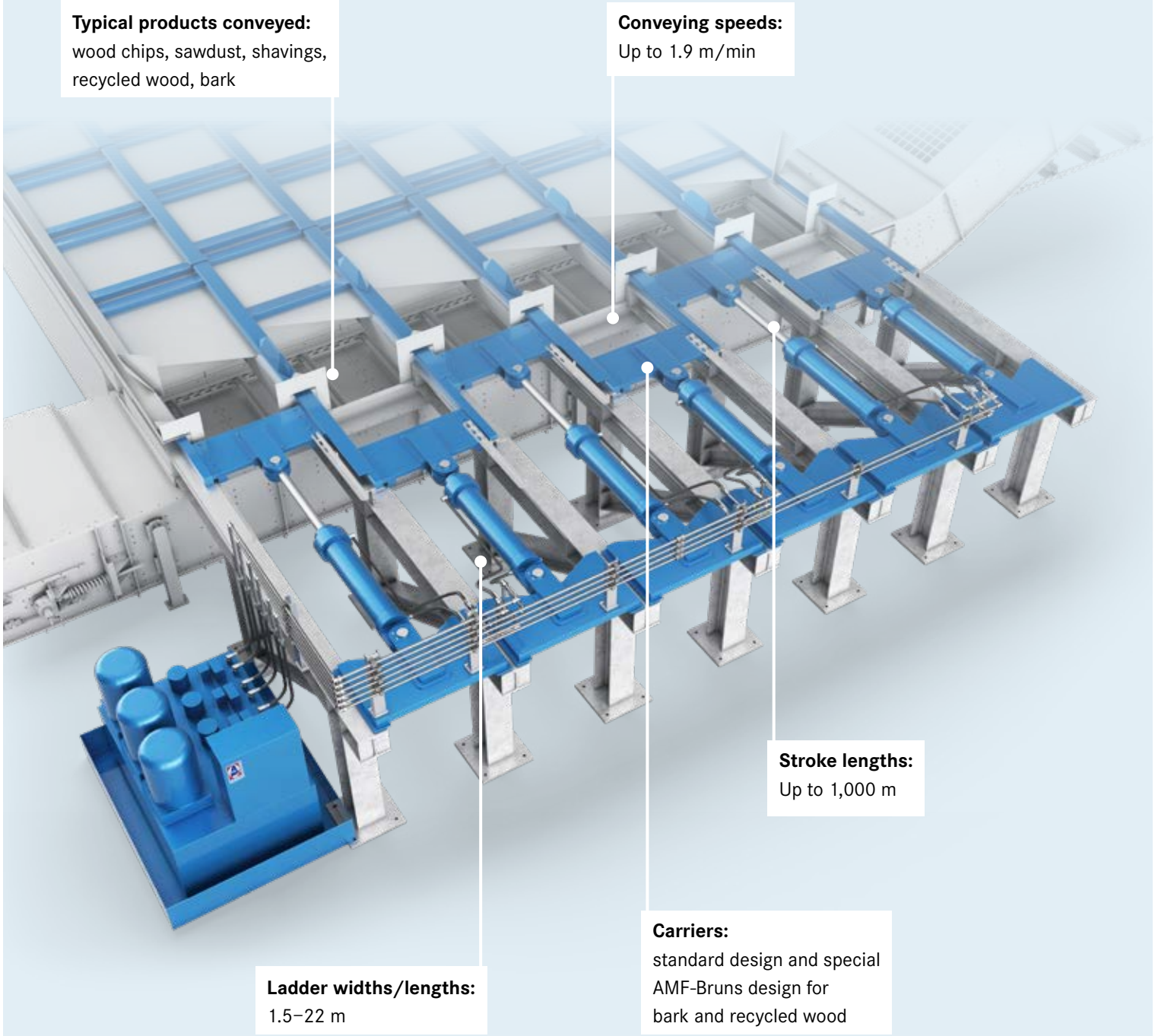
Technical data

Designs:	2 ladders supplied via hydraulic pump (system design), double-beam ladder design (H design)
Ladder width:	1.5 m
Ladder lengths:	to 22 m
Stroke length:	700 mm to 1,000 mm depending on the product to be conveyed
Conveying speeds:	0.6 m to 0.8 m/min for highly abrasive material (e.g. recycled material) 0.9 m to 1.3 m/min for moderately abrasive material (e.g. wood chippings) 1.4 m to 1.9 m/min for mildly abrasive material (e.g. sawdust)
Additional options:	Standard carrier for wood chips, shavings and sawdust/ special AMF-Bruns carrier for bark and recycling

Note: The conveying power is to be determined for each application, depending on the passage height, the number of ladders and the conveying speeds

Push and pull floors SUB from AMF-Bruns

For intermediate storage and metering



The benefits of AMF-Bruns push and pull floors:

- intermediate storage of large product quantities
- metered extraction of the material
- robust design



Please feel free to contact us.



AMF-Bruns GmbH & Co. KG · Hauptstraße 101 · 26689 Apen · Germany
 Phone: +49 (0)44 89 - 72 7100 · info@amf-bruns.de
www.amf-bruns.com