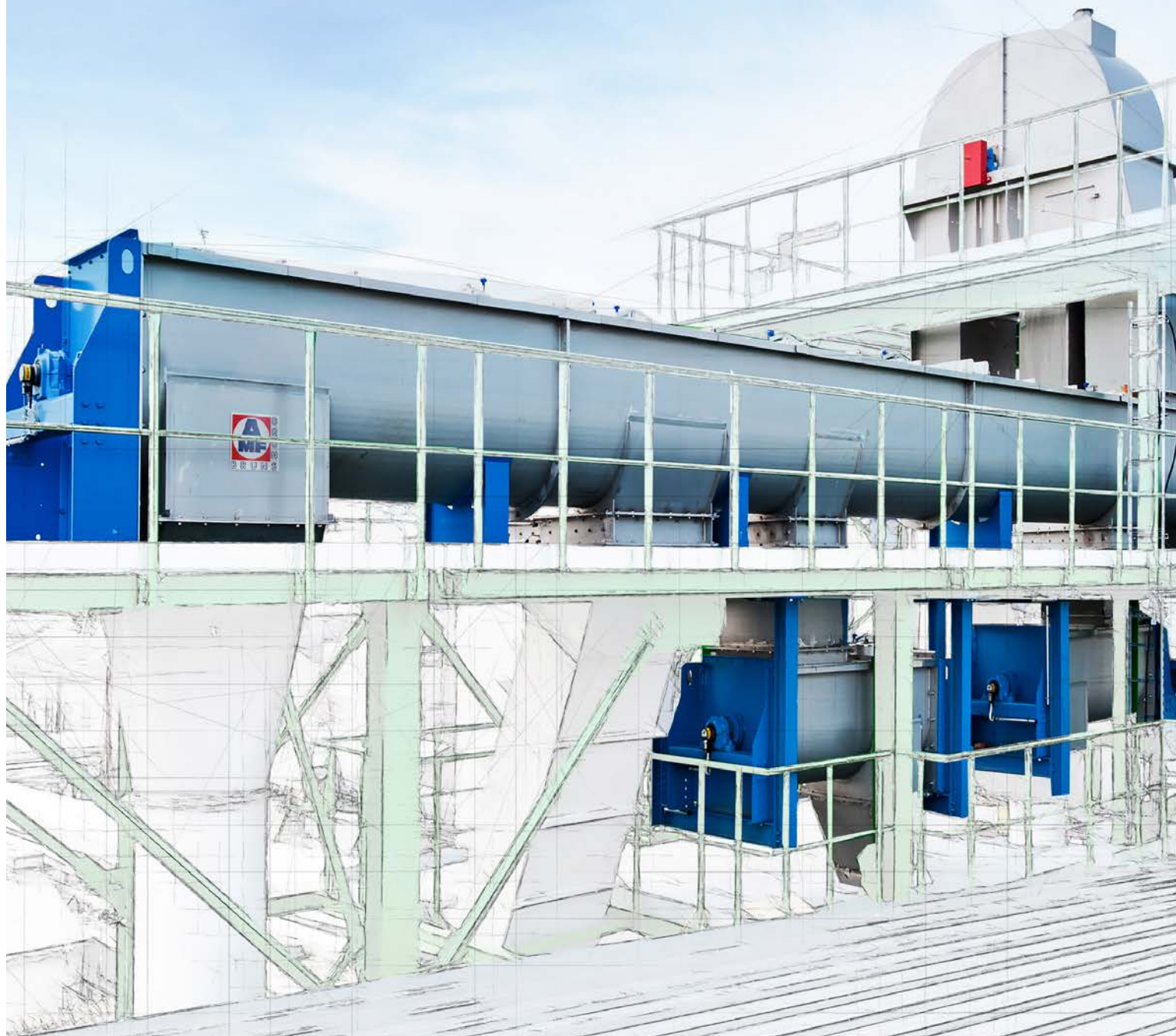


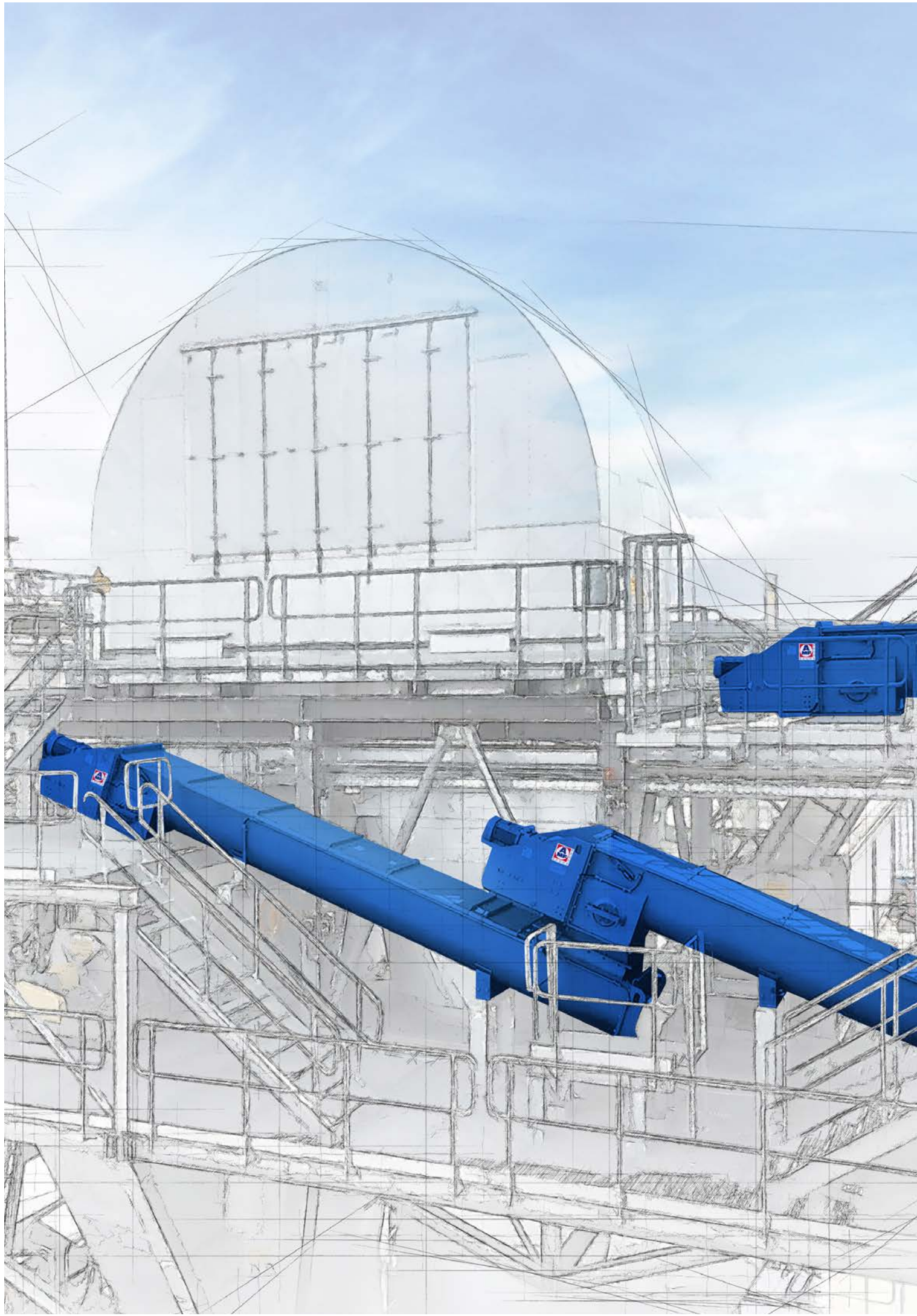
Trough Screw Conveyors

Technical Data



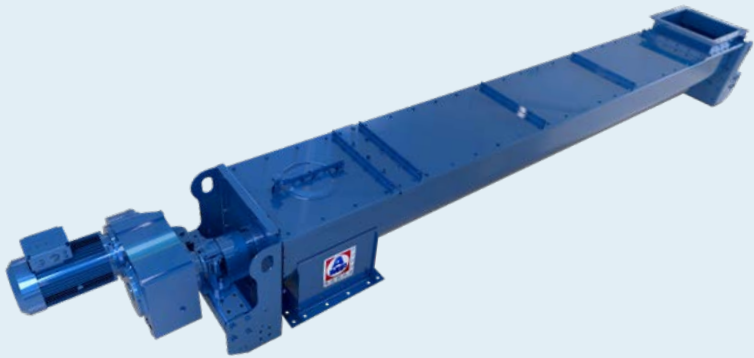
CONVEYORS
INDUSTRIAL SOLUTIONS

www.amf-bruns.com



Contents

- Overview of trough screw conveyors 4
- Trough screw conveyor TSF 100 DS FA..... 5
- Trough screw conveyor TSF 125 DS FA..... 6
- Trough screw conveyor TSF 160 DS FA..... 7
- Trough screw conveyor TSF 200 DS FA..... 8
- Trough screw conveyor TSF 250 DS FA..... 9
- Trough screw conveyor TSF 315 DS FA..... 10
- Trough screw conveyor TSF 400 DS FA..... 11
- Trough screw conveyor TSF 500 DS FA..... 12
- Trough screw conveyor TSF 630 DS FA..... 13
- Trough screw conveyor TSF 800 DS FA..... 14
- Trough screw conveyor TSF 1000 DS FA 15
- Trough screw conveyor TSF 1250 DS FA 16
- Trough screw conveyor TSF 1250 heavy-duty DS FA 17
- Trough screw conveyor TSF 1400 DS FA 18



Trough screw conveyors

TSF 100 to TSF 1400

Technical Data

Materials:	S235JR (St37)/1.4301/1.4571
Trough length:	up to 8000 mm manufactured in one piece, without intermediate flange
Gear types:	Spur gears, offset shaft gears and bevel gears
Drive types:	Direct drive, chain drive or coupling drive
Trough plate gauge:	2 mm to 10 mm, depending on size
Inlet and outlet:	Shape, size and position variable
Shaft seals:	Stuffing box, Braided seal
Screw diameter:	100 mm to 1400 mm (or as per client's spec)
Auger blade gauge:	2 mm to 12 mm, depending on size (or as per client's spec)
Additional options:	Protective sleeve/Baffle plate/Cleaning flap/Displacer/Overflow valve/Trough foot/ATEX/ Blocking trips/RPM monitoring/Centre bearing/ Custom paint/Special materials/Hard facing/ Wear shells/multiple inlets and outlets/Insulation

Conveying capacity for horizontal use:			
Screw diameter	Material Class A 45 % Filling ratio	Material Class B 30 % Filling ratio	Material Class C 15 % Filling ratio
[mm]	Qm [m³/h]	Qm [m³/h]	Qm [m³/h]
100	3,5	1	a. A.
125	7	3,5	1,1
160	14	6,5	2,5
200	23	11,5	4
250	42	20	6,5
315	70	35	11
400	120	57	18
500	195	90	29
630	220	140	45
800	260	225	70
1000	360	300	90
1250	o.r.	460	130
1400	o.r.	750	310
Material classes:	A: Displacement resistance K=2 Material loose and free flowing, non-abrasive (cereals, flour, oil seeds, compound feed, coal dust, plastic dust, plastic granules, etc.)	B: Displacement resistance K=3.5 Material not quite free-flowing, slightly abrasive, fine-grained to crushed or mixed (salt, sugar, gypsum, lime, sawdust, etc.)	C: Displacement resistance K=5 Material flows poorly, very abrasive, viscous, fibrous or large particles (ash, coke, ore, cement, limestone, soda, etc.)

As the amount being conveyed increases, the conveyor output decreases. Centre bearing only useable up to max. 30% filling ratio. o.r. = on request



Trough screw conveyors

TSF 100 DS FA

Technical Data

Materials:	S235JR (St37)/1.4301/1.4571
Trough size:	TSF 100
Trough length:	1000 mm – 3500 mm (in 100 mm Increments)
Trough plate gauges:	2 mm/3 mm
Flange gauge:	Trough plate thickness
Inlet I.W.:	112 mm x 112 mm
Outlet I.W.:	112 mm x 112 mm
Cover plate gauge:	3 mm
Gear size SEW:	FA27/FA37
Drive bearing:	ø 30
End bearing:	ø 30
Inspection flaps:	1 x DN 100
Tube shaft sizes:	44.5 x 3.2 up to screw length l = 3 m 60.3 x 5.6 up to screw length l = 3.5 m
Auger blades:	ø 100/100 Pitch/2 thickness/rght-hd thread
RPM monitoring:	4b with proximity switch Ni12U-EM18-AP6X 3D
Surface finish:	DIN EN ISO 12944-5 as per Data Sheet C2 or C3, RAL 1015/5010/6011/7035/9001 satin gloss
Additional options at extra charge:	Protective sleeve/Baffle plate/Cleaning flap/Displacer/ Overflow valve/Trough foot/ATEX/Special paint



Trough screw conveyors

TSF 125 DS FA

Technical Data

Materials:	S235JR (St37)/1.4301/1.4571	
Trough size:	TSF 125	
Trough length:	1000 mm – 3500 mm (in 100 mm Increments)	
Trough plate gauges:	2 mm/3 mm	
Flange gauge:	Trough plate thickness	
Inlet I.W.:	140 mm x 140 mm	
Outlet I.W.:	140 mm x 140 mm	
Cover plate gauge:	3 mm	
Gear size SEW:	FA27/FA37/FA47	
Drive bearing:	ø 30	
End bearing:	ø 30	
Inspection flaps:	1 x DN 100	
Tube shaft sizes:	44.5 x 3.2	up to screw length l = 2.5 m
	60.3 x 5.6	up to screw length l = 3.5 m
Auger blades:	ø 125/125 Pitch/2 thickness/rght-hd thread	
RPM monitoring:	4b with proximity switch Ni12U-EM18-AP6X/3D	
Surface finish:	DIN EN ISO 12944-5 as per Data Sheet C2 or C3, RAL 1015/5010/6011/7035/9001 satin gloss	
Additional options at extra charge:	Protective sleeve/Baffle plate/Cleaning flap/Displacer/ Overflow valve/Trough foot/ATEX/Special paint	



Trough screw conveyors

TSF 160 DS FA

Technical Data

Materials:	S235JR (St37)/1.4301/1.4571	
Trough size:	TSF 160	
Trough length:	1000 mm – 4500 mm (in 100 mm Increments)	
Trough plate gauges:	3 mm/4 mm/5 mm	
Flange gauge:	Trough plate thickness	
Inlet I.W.:	180 mm x 180 mm	
Outlet I.W.:	180 mm x 180 mm	
Cover plate gauge:	3 mm	
Gear size SEW:	FA27/FA37/FA47	
Drive bearing:	ø 40	
End bearing:	ø 35	
Inspection flaps:	1 x DN 100	
Tube shaft sizes:	60.3 x 5.6	up to screw length l = 3 m
	76.1 x 6.3	up to screw length l = 4 m
	88.9 x 5	up to screw length l = 4.5 m
Auger blades:	ø160/160 Pitch/3 thickness/rght-hd thread	
RPM monitoring:	4b with proximity switch Ni12U-EM18-AP6X 3D	
Surface finish:	DIN EN ISO 12944-5 as per Data Sheet C2 or C3, RAL 1015/5010/6011/7035/9001 satin gloss	
Additional options at extra charge:	Protective sleeve/Baffle plate/Cleaning flap/Displacer/ Overflow valve/Trough foot/ATEX/Special paint	



Trough screw conveyors

TSF 200 DS FA

Technical Data

Materials:	S235JR (St37)/1.4301/1.4571	
Trough size:	TSF 200	
Trough length:	1000 mm – 4500 mm (in 100 mm Increments)	
Trough plate gauges:	3 mm/4 mm/5 mm	
Flange gauge:	Trough plate thickness	
Inlet I.W.:	220 mm x 220 mm	
Outlet I.W.:	220 mm x 220 mm	
Cover plate gauge:	3 mm	
Gear size SEW:	FA47/FA57/FA67	
Drive bearing:	ø 45	
End bearing:	ø 40	
Inspection flaps:	1 x DN 200	
Tube shaft sizes:	60.3 x 5.6	up to screw length l = 3 m
	76.1 x 6.3	up to screw length l = 3.5 m
	88.9 x 5	up to screw length l = 4.5 m
Auger blades:	ø 200/200v Pitch/3 thickness/rght-hd thread	
RPM monitoring:	4b with proximity switch Ni12U-EM18-AP6X/3D	
Surface finish:	DIN EN ISO 12944-5 as per Data Sheet C2 or C3, RAL 1015/5010/6011/7035/9001 satin gloss	
Additional options at extra charge:	Protective sleeve/Baffle plate/Cleaning flap/Displacer/ Overflow valve/Trough foot/ATEX/Special paint	



Trough screw conveyors

TSF 250 DS FA

Technical Data

Materials:	S235JR (St37)/1.4301/1.4571	
Trough size:	TSF 250	
Trough length:	1500 mm – 7000 mm (in 100 mm Increments)	
Trough plate gauges:	3 mm/4 mm/5 mm	
Flange gauge:	Trough plate thickness	
Inlet I.W.:	270 mm x 270 mm	
Outlet I.W.:	270 mm x 270 mm	
Cover plate gauge:	3 mm	
Gear size SEW:	FA57/FA67/FA77	
Drive bearing:	ø 55	
End bearing:	ø 50	
Inspection flaps:	1 x DN 100	
Tube shaft sizes:	76.1 x 6.3	up to screw length l = 3.5 m
	133 x 10	up to screw length l = 6 m
	159 x 10	up to screw length l = 7 m
Auger blades:	ø 250/250 Pitch/4 thickness/rght-hd thread	
RPM monitoring:	4b with proximity switch Ni12U-EM18-AP6X 3D	
Surface finish:	DIN EN ISO 12944-5 as per Data Sheet C2 or C3, RAL 1015/5010/6011/7035/9001 satin gloss	
Additional options at extra charge:	Protective sleeve/Baffle plate/Cleaning flap/Displacer/ Overflow valve/Trough foot/ATEX/Special paint	



Trough screw conveyors

TSF 315 DS FA

Technical Data

Materials:	S235JR (St37)/1.4301/1.4571	
Trough size:	TSF 315	
Trough length:	2000 mm – 7500 mm (in 100 mm Increments)	
Trough plate gauges:	3 mm/4 mm/5 mm	
Flange gauge:	Trough plate thickness	
Inlet I.W.:	335 mm x 335 mm	
Outlet I.W.:	335 mm x 335 mm	
Cover plate gauge:	3 mm	
Gear size SEW:	FA67/FA77/FA87	
Drive bearing:	ø 60	
End bearing:	ø 60	
Inspection flaps:	1 x DN 300	
Tube shaft sizes:	88.9 x 5	up to screw length l = 3.5 m
	133 x 10	up to screw length l = 5.5 m
	193.7 x 12.5	up to screw length l = 7.5 m
Auger blades:	ø 315/300 Pitch/5 thickness/rght-hd thread	
RPM monitoring:	4b with proximity switch Ni12U-EM18-AP6X/3D	
Surface finish:	DIN EN ISO 12944-5 as per Data Sheet C2 or C3, RAL 1015/5010/6011/7035/9001 satin gloss	
Additional options at extra charge:	Protective sleeve/Baffle plate/Cleaning flap/Displacer/ Overflow valve/Trough foot/ATEX/Special paint	



Trough screw conveyors

TSF 400 DS FA

Technical Data

Materials:	S235JR (St37)/1.4301/1.4571	
Trough size:	TSF 400	
Trough length:	2000 mm – 7500 mm (in 100 mm Increments)	
Trough plate gauges:	3 mm/4 mm/5 mm	
Flange gauge:	Trough plate thickness	
Inlet I.W.:	425 mm x 425 mm	
Outlet I.W.:	425 mm x 425 mm	
Cover plate gauge:	3 mm	
Gear size SEW:	FA57/FA67/FA77	
Drive bearing:	ø 65	
End bearing:	ø 60	
Inspection flaps:	1 x DN 300	
Tube shaft sizes:	133 x 10	up to screw length l = 5 m
	159 x 10	up to screw length l = 6.5 m
	193.7 x 12.5	up to screw length l = 7.5 m
Auger blades:	ø 400/350 Pitch/5 thickness/rght-hd thread	
RPM monitoring:	4b with proximity switch Ni12U-EM18-AP6X 3D	
Surface finish:	DIN EN ISO 12944-5 as per Data Sheet C2 or C3, RAL 1015/5010/6011/7035/9001 satin gloss	
Additional options at extra charge:	Protective sleeve/Baffle plate/Cleaning flap/Displacer/ Overflow valve/Trough foot/ATEX/Special paint/Heavy duty bearings	

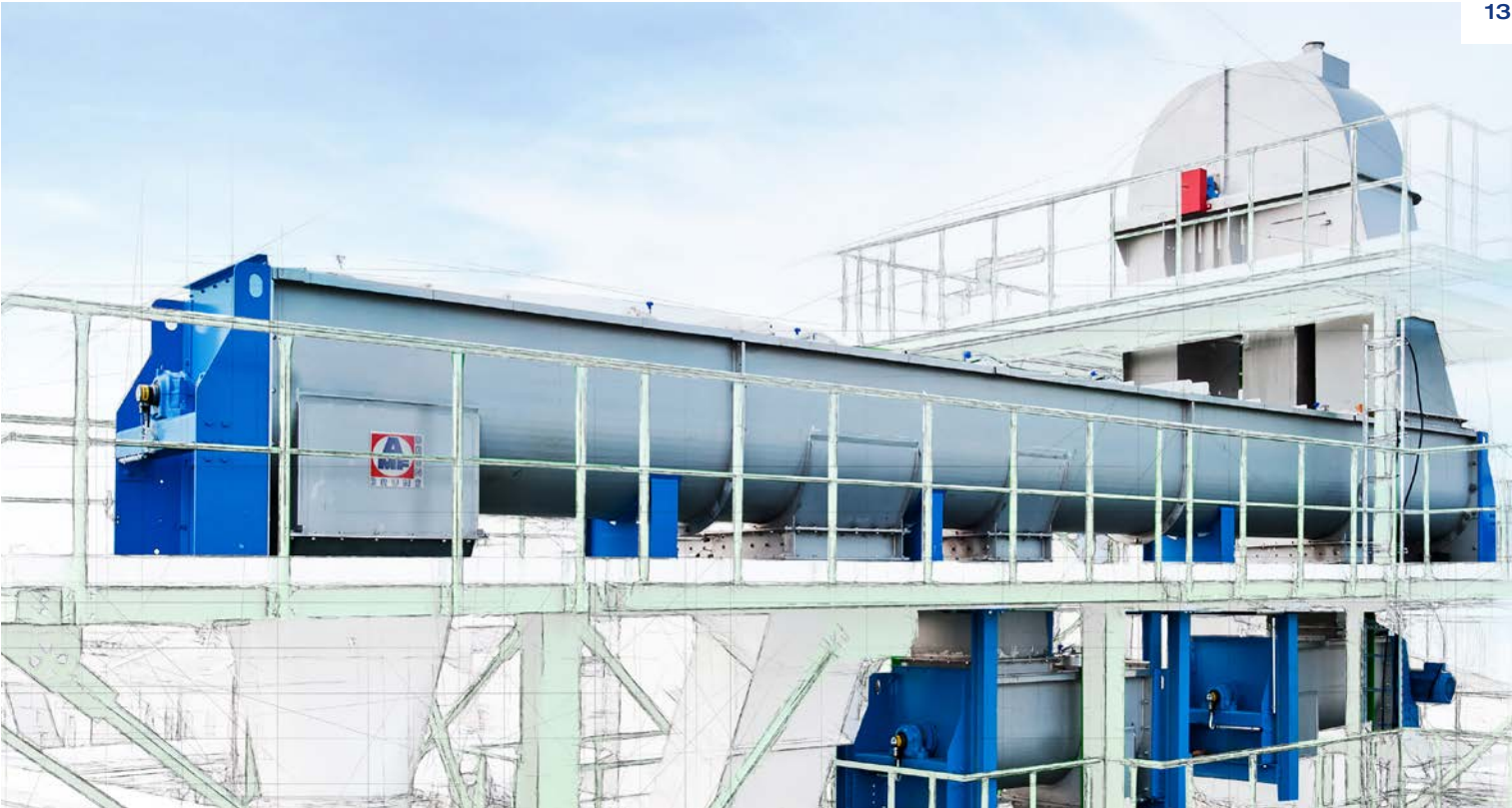


Trough screw conveyors

TSF 500 DS FA

Technical Data

Materials:	S235JR (St37)/1.4301/1.4571	
Trough size:	TSF 500	
Trough length:	2500 mm – 8000 mm (in 100 mm Increments)	
Trough plate gauges:	3 mm/4 mm/5 mm	
Flange gauge:	Trough plate thickness	
Inlet I.W.:	525 mm x 525 mm	
Outlet I.W.:	525 mm x 525 mm	
Cover plate gauge:	3 mm	
Gear size SEW:	FA77/FA87/FA97	
Drive bearing:	ø 85	
End bearing:	ø 75	
Inspection flaps:	1 x DN 300	
Tube shaft sizes:	133 x 10	up to screw length l = 5 m
	193.7 x 12.5	up to screw length l = 7 m
	219.1 x 12.5	up to screw length l = 8 m
Auger blades:	ø 500/400 Pitch/6 thickness/rght-hd thread	
RPM monitoring:	4b with proximity switch Ni12U-EM18-AP6X/3D	
Surface finish:	DIN EN ISO 12944-5 as per Data Sheet C2 or C3, RAL 1015/5010/6011/7035/9001 satin gloss	
Additional options at extra charge:	Protective sleeve/Baffle plate/Cleaning flap/Displacer/ Overflow valve/Trough foot/ATEX/Special paint/Heavy duty bearings	



Trough screw conveyors

TSF 630 DS FA

Technical Data

Materials:	S235JR (St37)/1.4301/1.4571	
Trough size:	TSF 630	
Trough length:	2500 mm – 8000 mm (in 100 mm Increments)	
Trough plate gauges:	4 mm/5 mm/6 mm	
Flange gauge:	Trough plate thickness	
Inlet I.W.:	660 mm x 660 mm	
Outlet I.W.:	660 mm x 660 mm	
Cover plate gauge:	3 mm	
Gear size SEW:	FA77/FA87/FA97	
Drive bearing:	ø 85	
End bearing:	ø 75	
Inspection flaps:	1 x DN 300	
Tube shaft sizes:	159 x 10	up to screw length l = 5 m
	193.7 x 10	up to screw length l = 6.5 m
	244.5 x 12.5	up to screw length l = 8 m
Auger blades:	ø 630/450 Pitch/8 thickness/rght-hd thread	
RPM monitoring:	4b with proximity switch Ni12U-EM18-AP6X 3D	
Surface finish:	DIN EN ISO 12944-5 as per Data Sheet C2 or C3, RAL 1015/5010/6011/7035/9001 satin gloss	
Additional options at extra charge:	Protective sleeve/Baffle plate/Cleaning flap/Displacer/ Overflow valve/Trough foot/ATEX/Special paint/Heavy duty bearings	

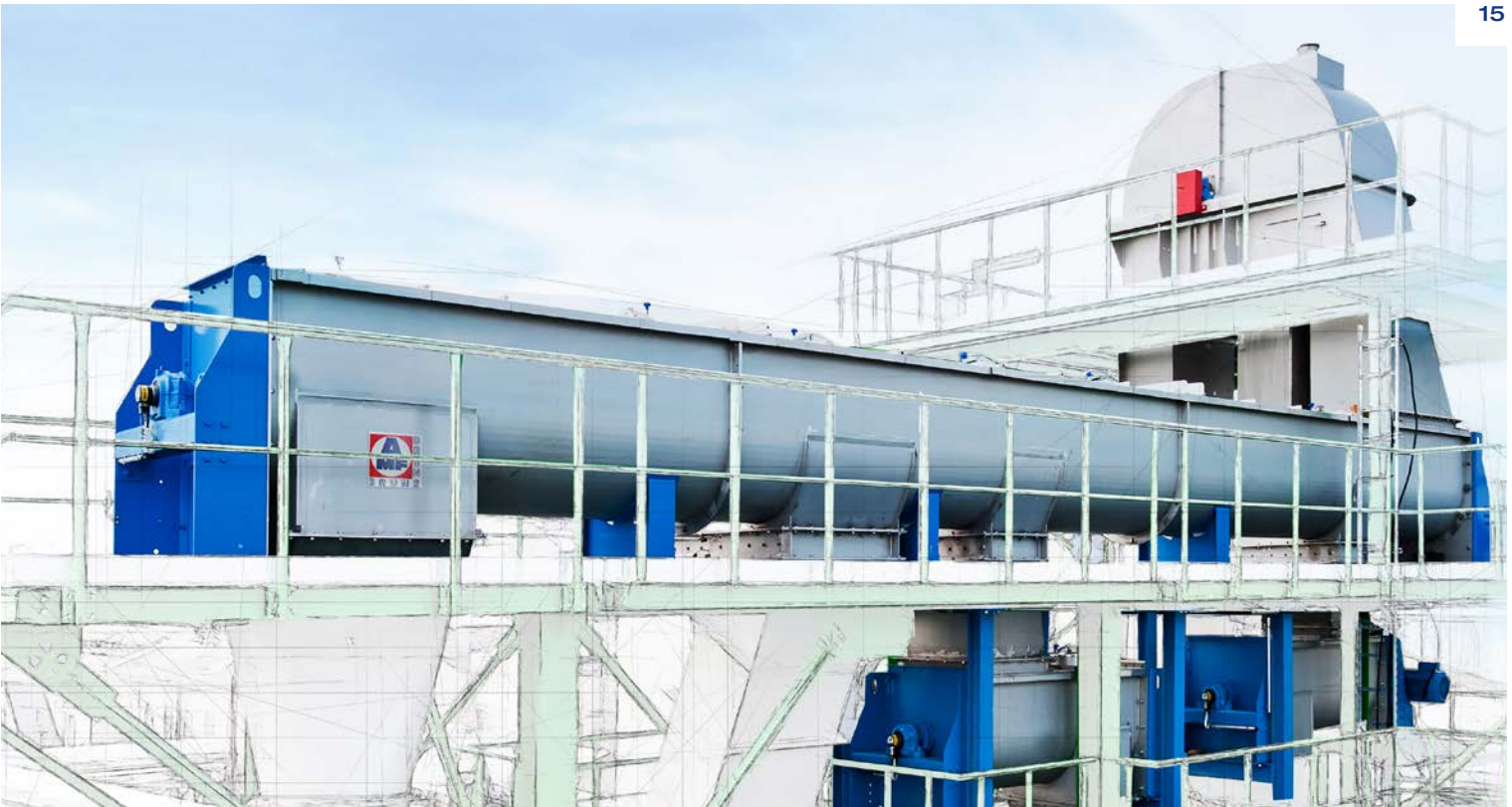


Trough screw conveyors

TSF 800 DS FA

Technical Data

Materials:	S235JR (St37)/1.4301/1.4571
Trough size:	TSF 800
Trough length:	2500 mm – 8000 mm (in 100 mm Increments)
Trough plate gauges:	5 mm/6 mm/8 mm
Flange gauge:	Trough plate thickness
Inlet I.W.:	830 mm x 830 mm
Outlet I.W.:	830 mm x 830 mm
Cover plate gauge:	3 mm
Gear size SEW:	FA87/FA97/FA107
Drive bearing:	ø 100
End bearing:	ø 90
Inspection flaps:	1 x DN 300
Tube shaft sizes:	193.7 x 12.5 up to screw length l = 6 m 244.5 x 12.5 up to screw length l = 7.5 m 273 x 12.5 up to screw length l = 8 m
Auger blades:	ø 800/500 Pitch/10 thickness/rght-hd thread
RPM monitoring:	4b with proximity switch Ni12U-EM18-AP6X/3D
Surface finish:	DIN EN ISO 12944-5 as per Data Sheet C2 or C3, RAL 1015/5010/6011/7035/9001 satin gloss
Additional options at extra charge:	Protective sleeve/Baffle plate/Cleaning flap/Displacer/ Overflow valve/Trough foot/ATEX/Special paint/Heavy duty bearings



Trough screw conveyors

TSF 1000 DS FA

Technical Data

Materials:	S235JR (St37)/1.4301/1.4571
Trough size:	TSF 1000
Trough length:	3000 mm – 9000 mm (in 100 mm Increments)
Trough plate gauges:	5 mm/6 mm/8 mm
Flange gauge:	Trough plate thickness
Inlet I.W.:	1040 mm x 1040 mm
Outlet I.W.:	1040 mm x 1040 mm
Cover plate gauge:	3 mm
Gear size SEW:	FA97/FA107/FA127
Drive bearing:	ø 110
End bearing:	ø 100
Inspection flaps:	1 x DN 300
Tube shaft sizes:	219.1 x 12.5 up to screw length l = 6 m 273 x 12.5 up to screw length l = 7.5 m 323.9 x 12.5 up to screw length l = 9 m
Auger blades:	ø 1000/560 Pitch/10 thickness/rght-hd thread
RPM monitoring:	4b with proximity switch Ni12U-EM18-AP6X 3D
Surface finish:	DIN EN ISO 12944-5 as per Data Sheet C2 or C3, RAL 1015/5010/6011/7035/9001 satin gloss
Additional options at extra charge:	Protective sleeve/Baffle plate/Cleaning flap/Displacer/ Overflow valve/Trough foot/ATEX/Special paint/Heavy duty bearings



Trough screw conveyors

TSF 1250 DS FA

Technical Data

Materials:	S235JR (St37)/1.4301/1.4571
Trough size:	TSF 1250
Trough length:	3000 mm – 8500 mm (in 100 mm Increments)
Trough plate gauges:	6 mm/8 mm
Flange gauge:	Trough plate thickness
Inlet I.W.:	1290 mm x 1290 mm
Outlet I.W.:	1290 mm x 1290 mm
Cover plate gauge:	3 mm
Gear size SEW:	FA97/FA107/FA127
Drive bearing:	ø 120
End bearing:	ø 110
Inspection flaps:	1 x DN 300
Tube shaft sizes:	219.1 x 12.5 up to screw length l = 6 m 273 x 12.5 up to screw length l = 7.5 m 323.9 x 12.5 up to screw length l = 8.5 m
Auger blades:	ø 1250/800 Pitch/10 thickness/rght-hd thread
RPM monitoring:	4b with proximity switch Ni12U-EM18-AP6X/3D
Surface finish:	DIN EN ISO 12944-5 as per Data Sheet C2 or C3, RAL 1015/5010/6011/7035/9001 satin gloss
Additional options at extra charge:	Protective sleeve/Baffle plate/Cleaning flap/Displacer/ Overflow valve/Trough foot/ATEX/Special paint



Trough screw conveyors

TSF 1250 heavy-duty DS FA

Technical Data

Materials:	S235JR (St37)/1.4301/1.4571
Trough size:	TSF 1250 heavy-duty
Trough length:	3500 mm – 8500 mm (in 100 mm Increments)
Trough plate gauges:	6 mm/8 mm
Flange gauge:	Trough plate thickness
Inlet I.W.:	1290 mm x 1290 mm
Outlet I.W.:	1290 mm x 1290 mm
Cover plate gauge:	3 mm
Gear size SEW:	FA107/FA127/FA157
Drive bearing:	ø 130
End bearing:	ø 115
Inspection flaps:	1 x DN 300
Tube shaft sizes:	219.1 x 12.5 up to screw length l = 6 m 273 x 12.5 up to screw length l = 7.5 m 323.9 x 12.5 up to screw length l = 8.5 m
Auger blades:	ø 1250/800 Pitch/10 thickness/rght-hd thread
RPM monitoring:	4b with proximity switch Ni12U-EM18-AP6X/3D
Surface finish:	DIN EN ISO 12944-5 as per Data Sheet C2 or C3, RAL 1015/5010/6011/7035/9001 satin gloss
Additional options at extra charge:	Protective sleeve/Baffle plate/Cleaning flap/Displacer/ Overflow valve/Trough foot/ATEX/Special paint



Trough screw conveyors

TSF 1400 DS FA

Technical Data

Materials:	S235JR (St37)/1.4301/1.4571
Trough size:	TSF 1400
Trough length:	3500 mm – 8000 mm (in 100 mm Increments)
Trough plate gauges:	8 mm/10 mm
Flange gauge:	Trough plate thickness
Inlet I.W.:	1450 mm x 1450 mm
Outlet I.W.:	1450 mm x 1450 mm
Cover plate gauge:	3 mm
Gear size SEW:	FA107/FA127/FA157
Drive bearing:	ø 140
End bearing:	ø 125
Inspection flaps:	1 x DN 300
Tube shaft sizes:	219.1 x 12.5 up to screw length l = 5.5 m 273 x 12.5 up to screw length l = 7 m 323.9 x 12.5 up to screw length l = 8 m
Auger blades:	ø 1400/900 Pitch/12 thickness/rght-hd thread
RPM monitoring:	4b with proximity switch Ni12U-EM18-AP6X/3D
Surface finish:	DIN EN ISO 12944-5 as per Data Sheet C2 or C3, RAL 1015/5010/6011/7035/9001 satin gloss
Additional options at extra charge:	Protective sleeve/Baffle plate/Cleaning flap/Displacer/ Overflow valve/Trough foot/ATEX/Special paint

Discover the

AMF-Bruns Service World!

Reliable, high-performance technology is a prerequisite for economic and efficient production. To make sure that you can always rely on your plant, we not only supply first-class technology, but also a customized service portfolio. We want you to be able to focus on the essentials, and make optimum use of the potentials provided by your investments.

This includes expert installation and the personal instruction of your employees: In addition, we provide an efficient service concept that reduces downtimes to a minimum, ensures optimized production processes, and guarantees a long service life for your plant.

With AMF-Bruns you can rely on a partner who is always at your side, to ensure lasting and safe plant operation. That is why the service we provide is not “off the shelf“, but is individually matched to your needs. This brochure provides all the relevant information and the contact data for your direct partner.

We will be happy to answer any further questions you might have regarding our services – simply contact us.!

We are always within easy reach

With AMF-Bruns, you are putting your trust in a partner who is always at your side to ensure long-term, safe plant operation. Take advantage of the expertise and experience of our staff. On your behalf, they watch out for quality, ensure fast

order processing and keep your budget in mind at all times. So you always get the best solution from us - safe, sustainable and economical.

First-class service right from the start

Our aim is your satisfaction: it starts with planning but does not stop after commissioning. That’s why we are constantly giving our employees technical training, to be able to provide you with optimum service in any situation. By ensuring professional installation and commissioning, our chief erectors,

fitters and engineers ensure optimal settings of your machinery and after that are always available for advice and practical help - for instance in matters of plant optimization and maintenance.

Spare parts and maintenance

By using AMF-Bruns original parts you are always at the cutting edge of technology. Our special maintenance packages also ensure a high level of operational readiness of your plant. AMF Bruns maintains its own stock of spare parts - this way we can guarantee constant availability and speedy

delivery, and remedy almost any technical problem without losing a great deal of time. It goes without saying that you have the full manufacturer’s warranty on all our replacement parts. We will be pleased to advise you!

Service Hotline: + 49 (0) 44 89 - 72 7100

More information is available at www.amf-foerderanlagen.de/service/ or send us an e-mail: service@amf-bruns.de

Please feel free to contact us.



AMF-Bruns GmbH & Co. KG · Hauptstraße 101 · 26689 Apen · Germany
Phone: +49 (0)44 89 - 72 7100 · info@amf-bruns.de
www.amf-bruns.com